

# 2020-2025 Nonpoint Source Program Implementation Plan

## Los Angeles Water Board Program Areas







# CA NPS Program Areas

## 2000 – 2013

The major sources of NPS pollution in CA are related to land use activities that include:

1. agriculture,
2. forestry (silviculture),
3. urban runoff, (e.g., from construction sites, roads and highways, septic systems),
4. marinas and boats,
5. hydromodification activities, and
6. resource extraction (e.g., mining)

Atmospheric deposition is also a source of NPS pollution.

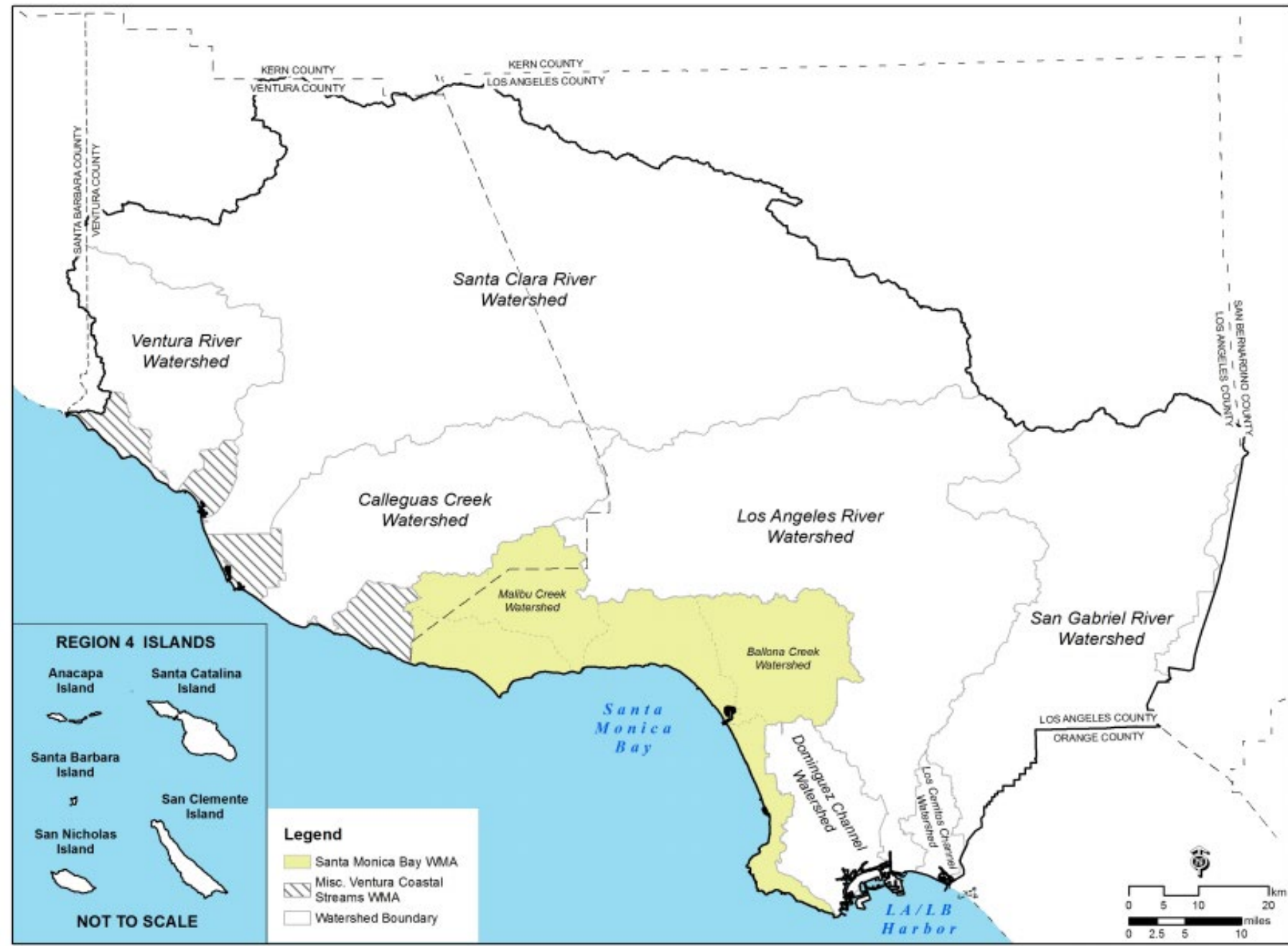
## 2014 - 2020

Programmatically, the CA NPS Program identified following statewide priorities:

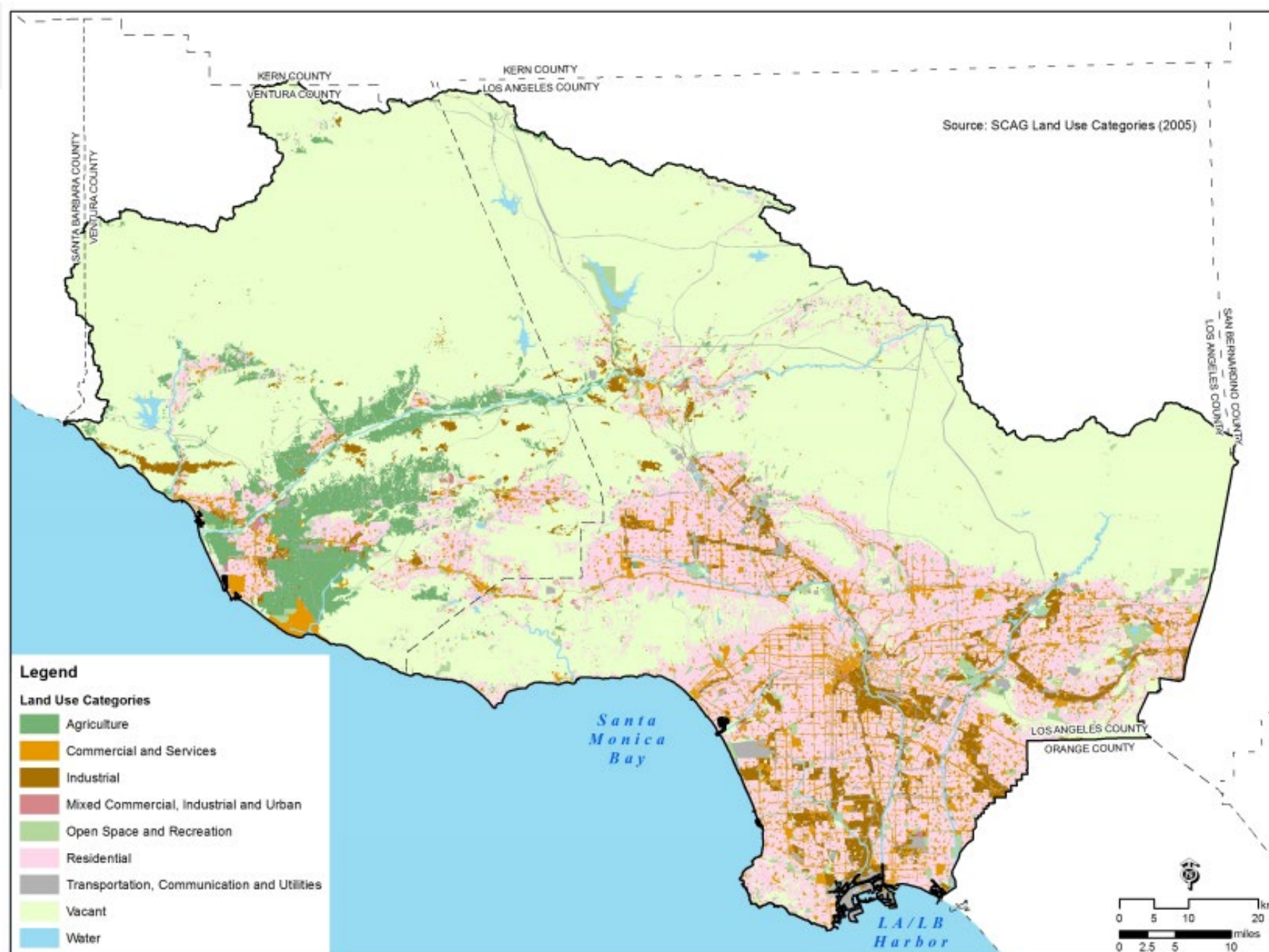
1. Agricultural and irrigated lands regulatory program
2. Forestry and Rangelands activities program
3. NPS-related TMDL implementation programs
4. Monitoring to determine implementation action effectiveness and water quality improvement
5. Region-specific priorities (e.g., permit coordination, watershed stewardship, vineyards, confined animal facilities, groundwater, aquatic habitat, trash, contaminated sediment, salinity)

## 2020 - 2025

1. Agriculture Lands
2. Forestry
3. Rangelands/Grazing
4. Implementation of NPS TMDLs
5. Coastal
6. Cannabis
7. Trash
8. Onsite wastewater treatment systems
9. Climate Change/Resiliency
10. Wetlands/Riparian Areas:
11. Source water/groundwater protection
12. Harmful Algal Blooms
13. Unique program areas (i.e., program areas not covered by all regions such as emergency response, confined animals, healthy watersheds)







# Los Angeles Region NPS Program Areas

- 2014 – 2020

- Irrigated Agriculture
- Grazing and Horse/Intensive Livestock
- Contaminated Sediment Remediation
- Trash

- 2020 – 2025

- Irrigated Agriculture
- Grazing and Horse/Intensive Livestock
- Contaminated Sediment Remediation
- Coastal Nonpoint Source Pollution Control – Marina
- Implementation of Malibu Creek and Lagoon Sedimentation and Nutrient TMDL

# Program Area #1: Irrigated Agriculture

- 1.1 Irrigated Lands Waiver

- Since 2005
- To attain and maintain water quality benchmarks
- An iterative process of management practice implementation
- Extended in April 2021
- To be renewed in April 2022

# Program Area 1: Irrigated Agriculture

- 1.2 Ventura River Watershed Groundwater-Surface Water Hydrology and Nutrient Transport Models
  - Ventura River Watershed Algae TMDL (2012)
  - California Water Action Plan (2014)
  - To develop Integrated groundwater-surface water hydrology and nutrient transport models
  - To assist the SB in establishing instream flows criteria
  - To assist the RB by refining information for TMDL



# Program Area #2: Grazing and Horse/ Intensive Livestock

- 2.1 Grazing

- Ventura River Watershed Algae TMDL (2012)
- 10% reduction from the baseline loading
- Compliance Deadline: June 28, 2023

# Program Area 2: Grazing and Horse/ Intensive Livestock

- **2.2 Horse/Intensive Livestock**
  - Ventura River Watershed Algae TMDL (2012)
  - Approximately 650 horse and intensive livestock facilities
  - Compliance Deadline: June 28, 2023

# Program Area #3: Contaminated Sediment Remediation

## • 3.1 McGrath Lake

- McGrath Lake PCBs, Pesticides and Sediment Toxicity TMDL (2011)
- Lake sediment
- Memorandum of Agreement (MOA) executed in 2015
- Compliance Deadline: June 30, 2025



# Program Area #3: Contaminated Sediment Remediation (continued)

- 3.2 Marina del Rey Harbor

- Revised Marina del Rey Harbor Toxic Pollutants TMDL (2015)
- In-harbor sediment
- Memorandum of Agreement (MOA) executed in 2017
- Compliance Deadline: March 22, 2029

# Program Area 3: Contaminated Sediment Remediation

- 3.3 Santa Clara River Lakes

- Santa Clara River Lakes Nutrient TMDL (2017)
- Lake sediment
- Memorandum of Agreement or Clean-up and Abatement Order
- Compliance Deadline: June 27, 2032

# Program Area #4: Coastal NPS Pollution Control - Marina

- 4.1 Maria del Rey Harbor

- Revised Marina del Rey Harbor Toxic Pollutants TMDL (2015)
- Dissolved copper in water column
- 85% reduction of dissolved copper from boats
- Compliance Deadline: March 22, 2024



# Program Area 4: Coastal NPS Pollution Control - Marina

- 4.2 Other Marinas

- Biocides also used in hull paints for the boats in Alamitos Bay, Channel Island Harbor, King Harbor, LA-LB Harbors and Ventura Harbor-Ventura Keys
- Maintain consistency in the compliance requirements

# Program Area 5: Implementation of Malibu Creek Nutrient TMDL

- 5.1 Livestock Sources, and
- 5.2 Golf Courses
  - Both identified in the Malibu Creek Nutrient TMDL
  - Compliance Deadline: May 16, 2022

<b>Waterbody</b>	<b>Pollutant(s)</b>
Alamitos Bay, Channel Island Harbor, King Harbor, Los Angeles and Long Beach Harbors, and Ventura Harbor-Ventura Keys	Biocides
Calleguas Creek Watershed	Nitrogen Compounds, Boron, Chloride, Sulfate and TDS (Salts)
Calleguas Creek Watershed and Mugu Lagoon	Organochlorine Pesticides, PCBs, Siltation, Toxicity, Chlorpyrifos, Diazinon, Metals and Selenium
Malibu Creek Watershed	Nutrients and Sedimentation
Marina del Rey Harbor	Toxic Pollutants (Copper)
McGrath Lake	PCBs, Pesticides and Sediment Toxicity
Oxnard Drain No.3	Pesticides, PCBs and Sediment Toxicity
Revolon Slough and Beardsley Wash	Trash
Santa Clara River Lakes	Nutrients
Santa Clara River Watershed	Nitrogen Compounds and Bacteria
Upper Santa Clara River	Chloride
Ventura River Estuary	Trash
Ventura River Watershed	Algae, Eutrophic Conditions and Nutrients





Questions?